

ICT ADDENDUM		ITA01
project name / location	UNIVERSITY OF TORONTO CQIQC SUITE & QIC LAB – P078-24-109 225 HURON ST, TORONTO, ON, M5S 1A7	
project no.	251016	
to	MCCALLUMSATHER	
attention	MARWA REFAAT	
date issued	JANUARY 9, 2026	





Amend the Contract Documents and Specifications for the above project as follows:

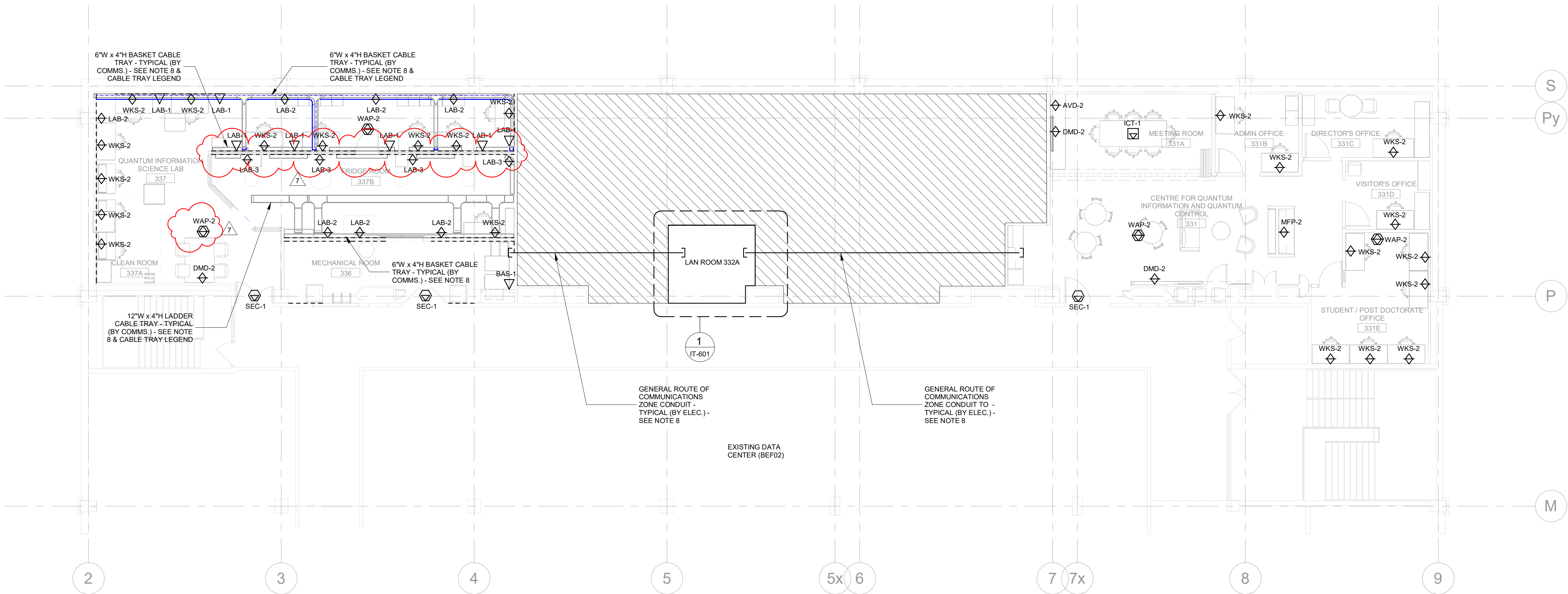
1. DRAWINGS:
 - 1.1 IT-303 – LEVEL 3 – IT/COMMUNICATIONS PLAN
2. SPECIFICATIONS:
 - 2.1 None.
3. DESCRIPTION:
 - 3.1 Refer to Drawing IT-303 (Re-Issued):
 - 3.1.1 Revised elevation of cable trays as shown. Coordinate exact locations and elevations with architectural drawings.
 - 3.1.2 Revised layout of cable trays as shown. Coordinate exact locations and elevations with architectural drawings.
 - 3.1.3 Revised location of one (1) wireless access point data outlet to avoid interference with air ducts as shown. Contractor to ensure all wireless access points are installed at lowermost elevation in ceiling with respect to surrounding ceiling services (lighting, HVAC, etc.) to ensure optimal signal propagation.
 - 3.1.4 Communications contractor to ensure a minimum of 2ft. between WAPs and any fluorescent lighting, minimum 3ft. between WAP and any metallic/reflective objects, minimum 5ft. between WAP and any obstacles such as beams/columns.
4. ENCLOSURES:
 - 4.1 Drawings: IT-303.

MULVEY & BANANI INTERNATIONAL INC.



SAURABH NARVEKAR, M.TECH., RCDD,
SENIOR ICT DESIGNER.

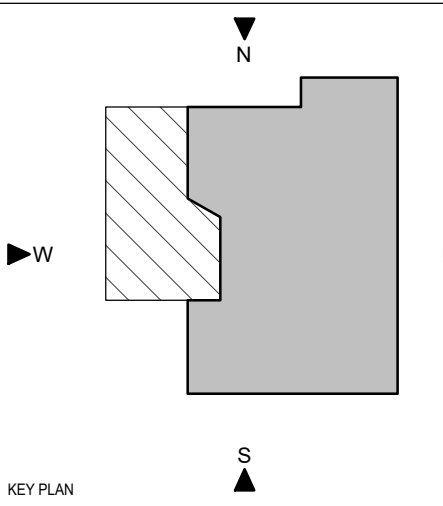
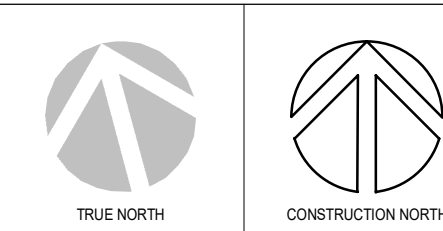
SHEET LEGEND	
LINE-TYPE / SYMBOL	DESCRIPTION
	6"W x 4"H OVERHEAD WIRE-MESH BASKET CABLE TRAY INSTALLED AT 2900mm A.F.F. - TYPICAL (BY COMMS.) - FOR LAB PERSONNEL USE ONLY.
	6"W x 4"H OVERHEAD WIRE-MESH BASKET CABLE TRAY INSTALLED AT 2200mm A.F.F. - TYPICAL (BY COMMS.) - FOR LAB PERSONNEL USE ONLY.
	12"W x 4"H OVERHEAD LADDER RACK CABLE TRAY INSTALLED AT 2600mm A.F.F. - TYPICAL (BY COMMS.) - FOR LAB PERSONNEL USE ONLY.
	SURFACE MOUNT RACEWAY FOR POWER AND COMMUNICATIONS CABLING - TYPICAL (BY ELECTRICAL)



NOTES:

- ALL DATA CABLING SHOWN ARE NEW AND RATED TO CATEGORY 6A PERFORMANCE STANDARDS UNLESS OTHERWISE NOTED. DATA OUTLETS ANNOTATED AS "SEC" & "BAS" SHALL BE ROUTED TO AND TERMINATED IN F&S RACK LOCATED IN PENTHOUSE MECHANICAL ROOM 499.
- ALL CAT.6A DATA CABLING ON LEVEL 3 IN AREA OF SCOPE SHALL BE ROUTED TO AND TERMINATE IN LAN ROOM 332A IN EXISTING 2-POST RACK AS SHOWN UNLESS OTHERWISE NOTED.
- ALL WAP DEVICES WITH COMPATIBLE MOUNTING PLATES TO BE SUPPLIED BY CLIENT. WAPS TO BE INSTALLED AND PATCHED BY COMMUNICATIONS CONTRACTOR.
- REFER TO ARCHITECTURAL/INTERIOR DESIGNER DRAWINGS FOR DEVICE/OUTLET MOUNTING HEIGHTS AND EXACT LOCATIONS.
- OPEN, HARD, BAFFLE & MESH CEILING DATA CABLES TO BE RUN INSIDE CONDUITS (CONDUIT TO BE SUPPLIED AND INSTALLED BY ELECTRICAL CONTRACTOR). REFER TO ELECTRICAL DRAWINGS FOR CONDUIT SIZING AND ROUTING.
- IN MEETING ROOMS AND Huddle ROOMS, PROVIDE COMPATIBLE DEVICE INSERTS AND/OR ADAPTERS FOR TABLES AS REQUIRED. PROVIDE PATCH CORDS OR PIGTAILS TO BE PATCHED TO TABLES. COORDINATE WITH FURNITURE VENDOR AND INTERIOR DESIGNER.
- COMMUNICATIONS CONTRACTOR TO ENSURE HORIZONTAL DATA CABLING IS NOT ROUTED OVER QIS LAB WIRE-MESH BASKET TRAYS. QIS LAB WIRE-MESH BASKET TRAYS ARE INTENDED FOR LAB PERSONNEL USE ONLY (PATCH CORD ROUTING, EQUIPMENT INTERCONNECTS).
- EXACT ROUTE OF COMMUNICATIONS ZONE CONDUITS SHALL BE COORDINATED ON SITE. ALL CONDUITS SHALL BE SUPPLIED AND INSTALLED BY THE ELECTRICAL CONTRACTOR.
- COMMUNICATIONS CONTRACTOR TO COORDINATE ACCESS TO LAN ROOM 332A WITH CLIENT-IT TEAM. ENSURE ALL WORK WITHIN LAN ROOM 332A IS COORDINATED WITH AND APPROVED BY CLIENT-IT TEAM PRIOR TO COMMENCEMENT OF WORK.

PROJECT LOGO



KEY PLAN

REVISIONS

No.	DESCRIPTION	DATE
7	ISSUED FOR ADDENDUM #1	2025-01-09
6	ISSUED FOR TENDER	2025-11-27
5	ISSUED FOR 100% CD	2025-11-21
4	ISSUED FOR 90% CD	2025-09-17
3	ISSUED FOR 100% DO R1	2025-09-19
2	ISSUED FOR 100% DO	2025-07-10
1	ISSUED FOR 50% DO	2025-06-15

DISCREPANCIES MUST BE REPORTED IMMEDIATELY TO THE ARCHITECT / ENGINEER BEFORE PROCEEDING.
ONLY FIGURED DIMENSIONS MUST BE USED.
THE CONTRACTOR MUST CHECK THE DIMENSIONS ON SITE.
THE DRAWING IS PROTECTED BY COPYRIGHT.
ALL DIMENSIONS ARE SHOWN IN MILLIMETERS.
DO NOT SCALE THE DRAWINGS.

mcCallumSather
Westinghouse HQ, 2nd Floor
286 Sanford Ave. N
Hamilton, ON L8L 6A1
905.526.6700
www.mccallumsather.com

SEAL

CONSULTANTS



PROJECT:
University of Toronto CQIQC Suite and QIS Lab

University of Toronto,
27 King's College Cir,
Toronto, ON M5S 1A1

DRAWING TITLE:
LEVEL 3 - IT/COMMUNICATIONS PLAN

SHEET SIZE: ARCH D (810x114) SCALE: 1:100

PROJECT NO: **251016**

DRAWING NO.: **IT-303**